



# ISTITUTO GEMMOLOGICO NAZIONALE

JEWELS

REPORT N. 30819

ROME, 13/January/2022

DESCRIPTION:

Platinum bracelet set with SAPPHIRES (variety of corundum) and DIAMONDS.

(see picture)

WEIGHT gr.:

44.74

CENTRAL GEMS:

Ranging from 1.00 to 2.80 ca.

N°23

SAPPHIRES

Cut:

Rectangular, steps

Weight:

ct. 38.00 total approx.

Colour:

Intense blue

Saturation:

Excellent

Transparency:

Excellent to very good

Origin:

(Burma - Myanmar)

LATERAL GEMS:

N°23

DIAMONDS

Cut:

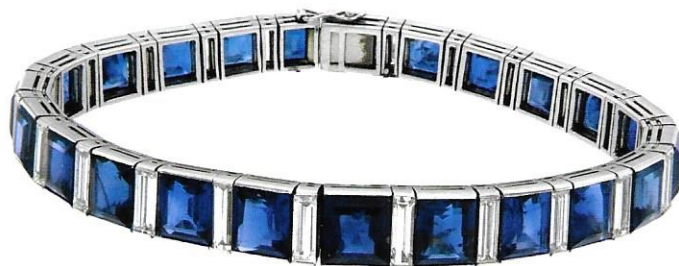
Baguette

Weight:

ct. 6.50 total approx.

STAMPELS:

Eagle's head - dog's head - G (in triangle)



OBSERVATIONS:

The tested gems have resulted to be:  
**NATURAL SAPPHIRES\*** and **DIAMONDS**  
\*No indication of thermal treatment

NOTES: See info on reverse side



Dr. F. Butini, GG, FGA

E. Butini, GG, FGA